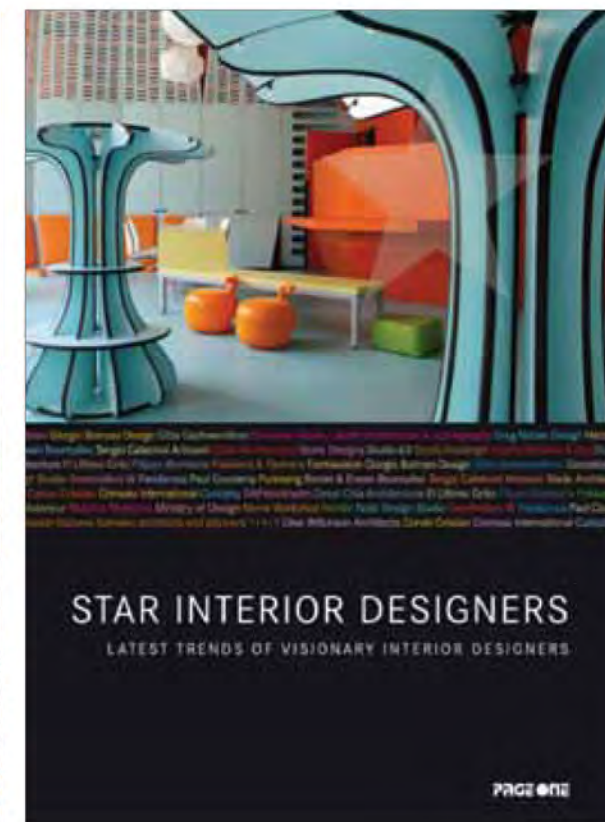




vision Giorgio Borroso Design Gitta Gschwendtner Gonzalez Haase/ atelier architecture & scenography Greg Natale Design Héctor Erwan Bouroullec Sergio Calatrani Artroom Slade Architecture Stone Designs Studio 63 Studio Aisslinger Studio Makkink & Bey Studio Architecture El Ultimo Grito Filippo Bombace Fokkema & Partners Formavision Giorgio Borroso Design Gitta Gschwendtner Gonzalez Haase Design Studio Overtreders W Pandarosa Paul Coudamy Puresang Ronan & Erwan Bouroullec Sergio Calatrani Artroom Slade Architects Corvin Cristian Creneau International Curiosity DAPstockholm Desai Chia Architecture El Ultimo Grito Filippo Bombace Fokkema Lehanneur Maurice Mentjens Ministry of Design Nema Workshop Nendo Note Design Studio Overtreders W Pandarosa Paul Coudamy Silvestin Giuliana Salmaso architects and planners 1+1=1 Clive Wilkinson Architects Corvin Cristian Creneau International Curiosity

STAR INTERIOR DESIGNERS

LATEST TRENDS OF VISIONARY INTERIOR DESIGNERS

STAR INTERIOR DESIGNERS**LATEST TRENDS OF VISIONARY INTERIOR DESIGNERS**

This book is an expansive collection of the work of world-renowned interior designers such as Patrick Jouin, Matali Crasset, Philippe Starck, Marcel Wanders, Sybarite, El Último Grito, and Sergio Calatroni. The works are diverse but the designers are unified by a clear sense of their respective conceptual directions. They approach a room armed with expertise on various disciplines, including architecture, environmental psychology and decoration. **Star Interior Designers** serves not only as a guide to the best interior design projects around the world but also as an inspiring reference for unique ideas. The result is an invaluable resource for interior designers, architects and students alike.

978-981-245-978-7
250 × 150mm
592 pages
PB w flaps
Available
AC

The Equatorial Wrap Singapore, Singapore / 2004 / © Jeremy San

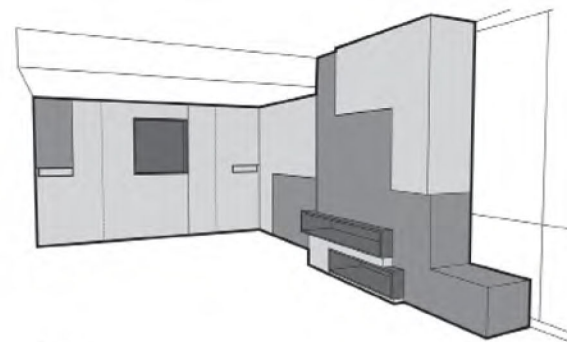


This private three-bedroom apartment in the center of the city has a half outdoors dining room that also serves as a hall.

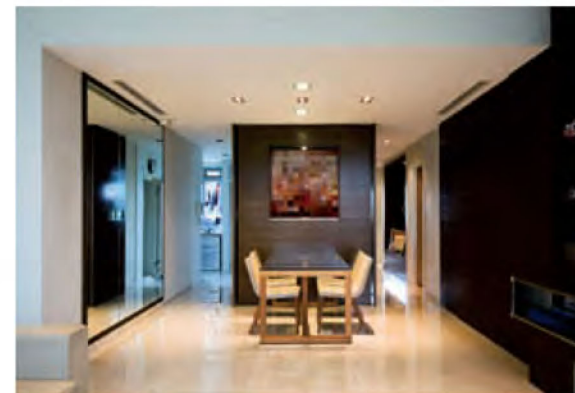
Studio SKLIM



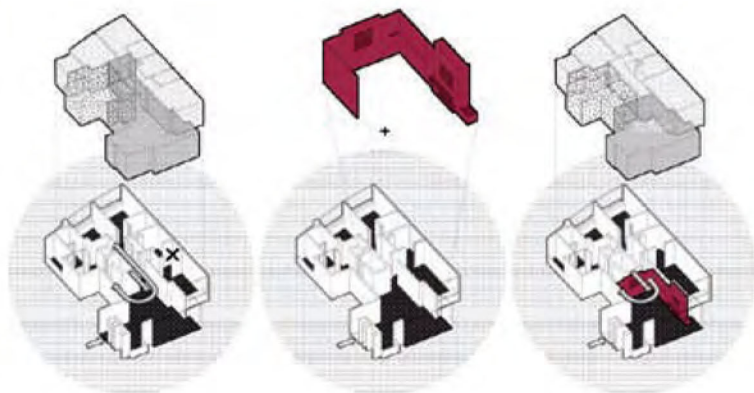
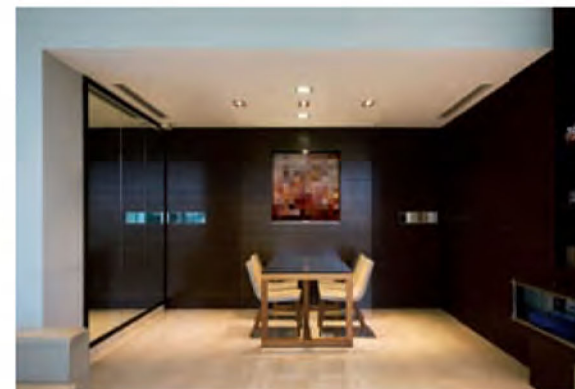
© Studio SKLIM



Perspective



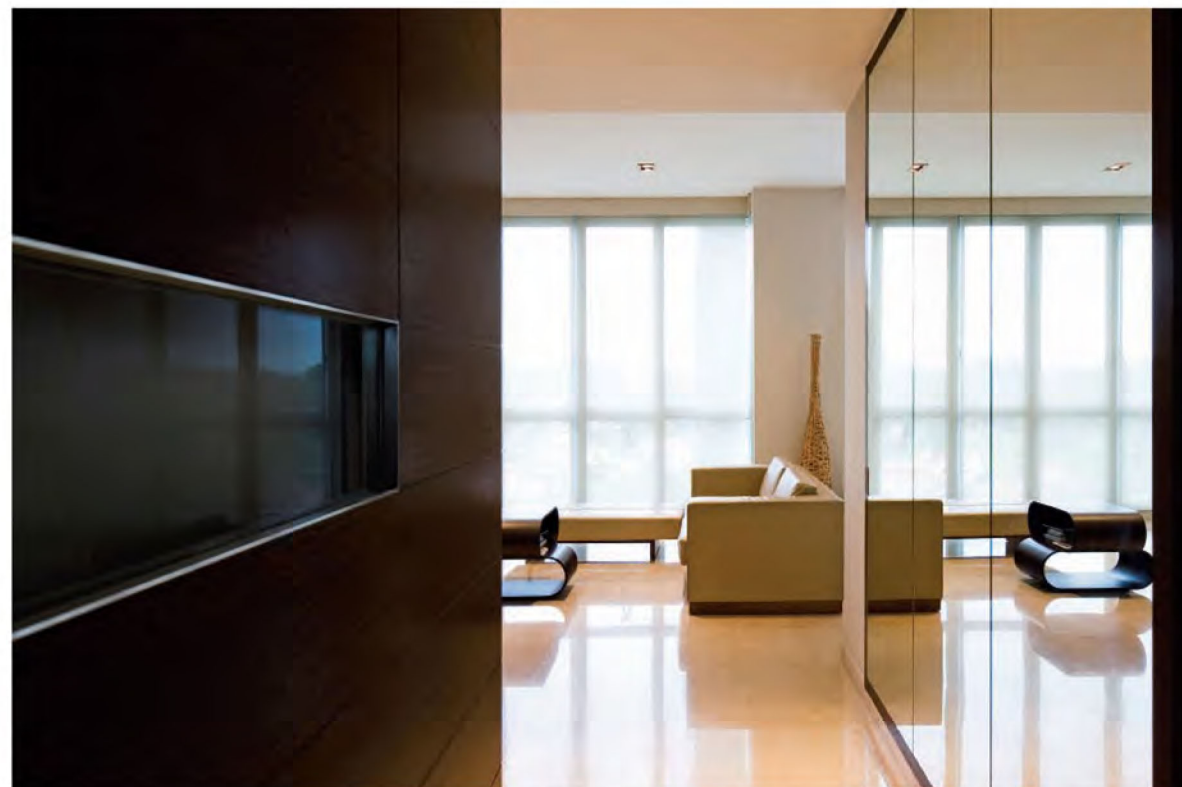
Elevation



Axonometries



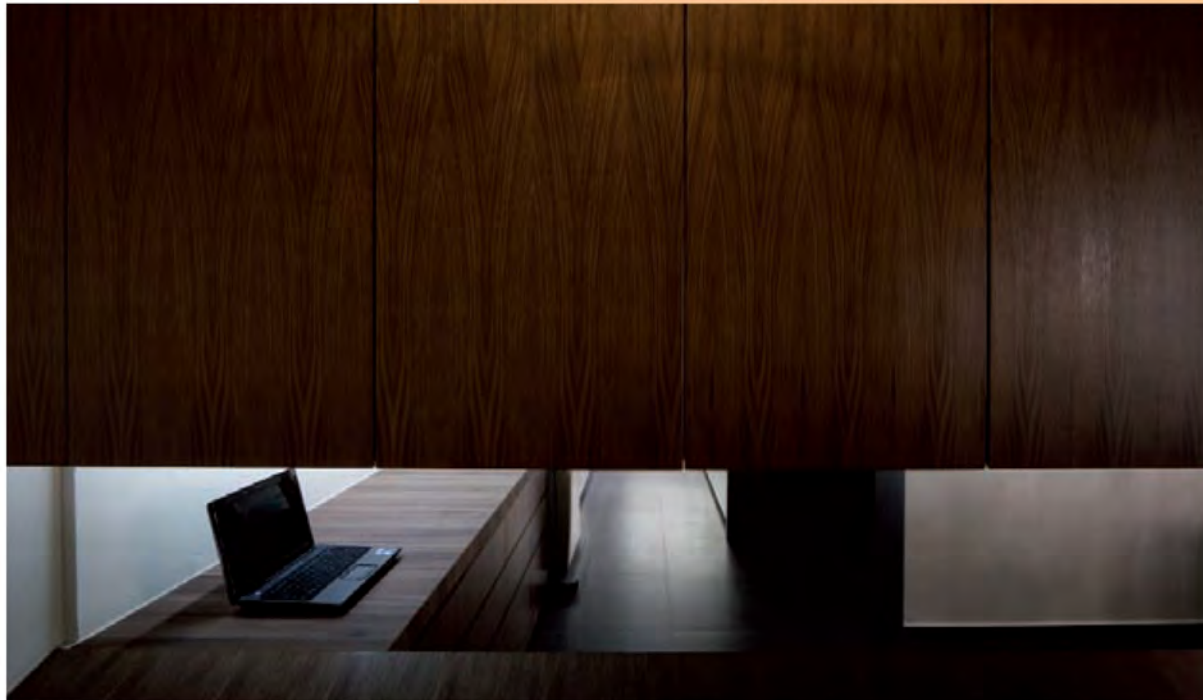
Sections



To achieve a uniform space, the same materials were used for the interior and the spaces were compartmentalized to achieve increased intimacy.



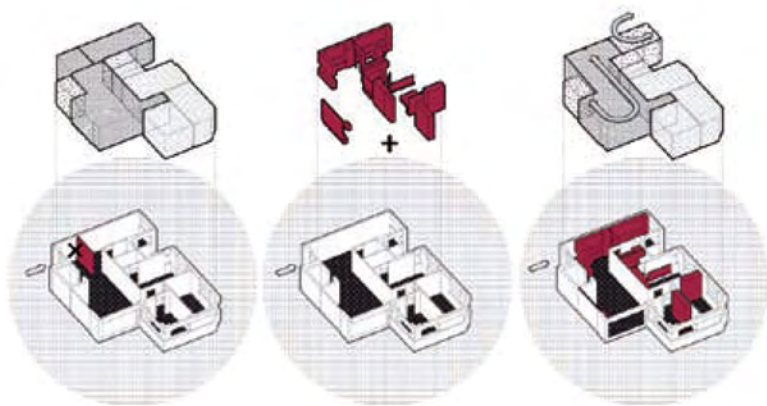
Studio SKLIM was officially founded in 2010 by Kevin Lim Sui Kuan. He studied architecture at the National University of Singapore. He previously worked in London, Singapore and Beijing for the Dutch architectural firm Office for Metropolitan Architecture (OMA). Kevin Lim was a key member of the OMA's architectural team during the design process of the Singapore Scotts Tower, a high-rise luxury residential tower. This emergent studio has received wide international press coverage and its work has been featured in *Monitor* and *Domus* magazines.



This apartment is the result of a refurbishment that had pragmatism as the main focus. The main challenge was to reconfigure the space of the original home and convert it into a flowing interior, taking into consideration restrictions imposed by regulations.



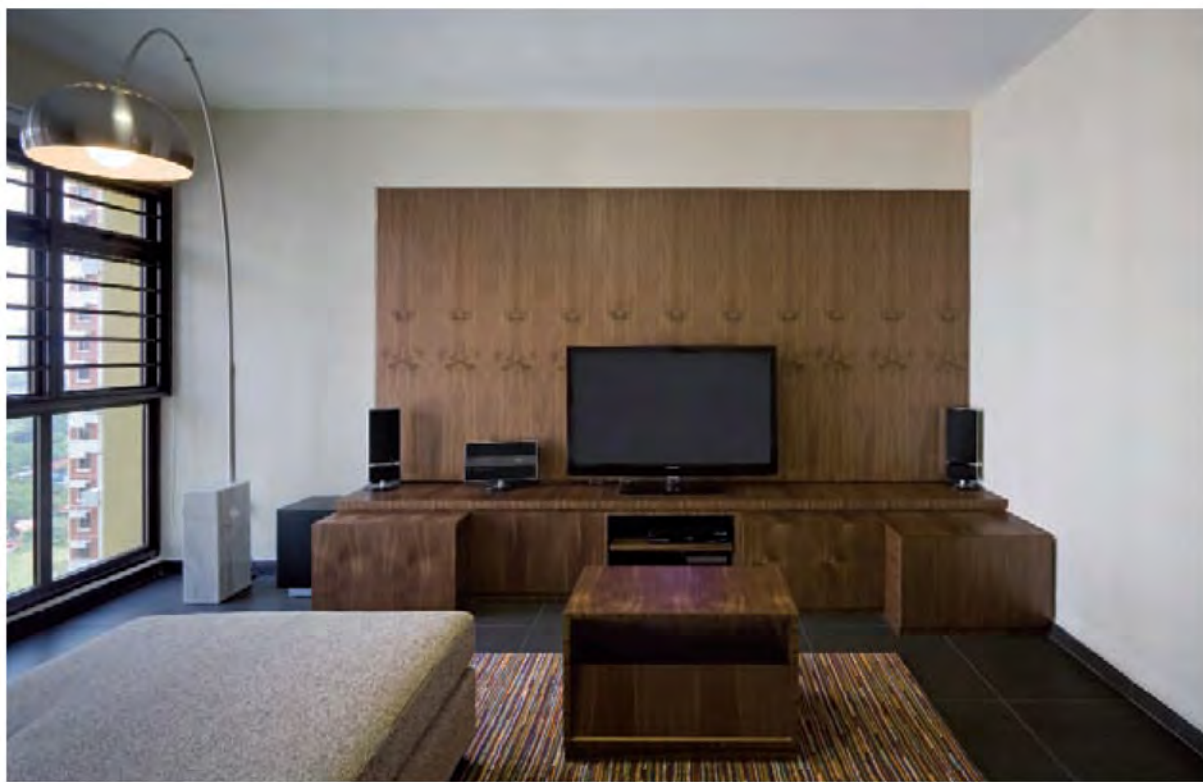
Section



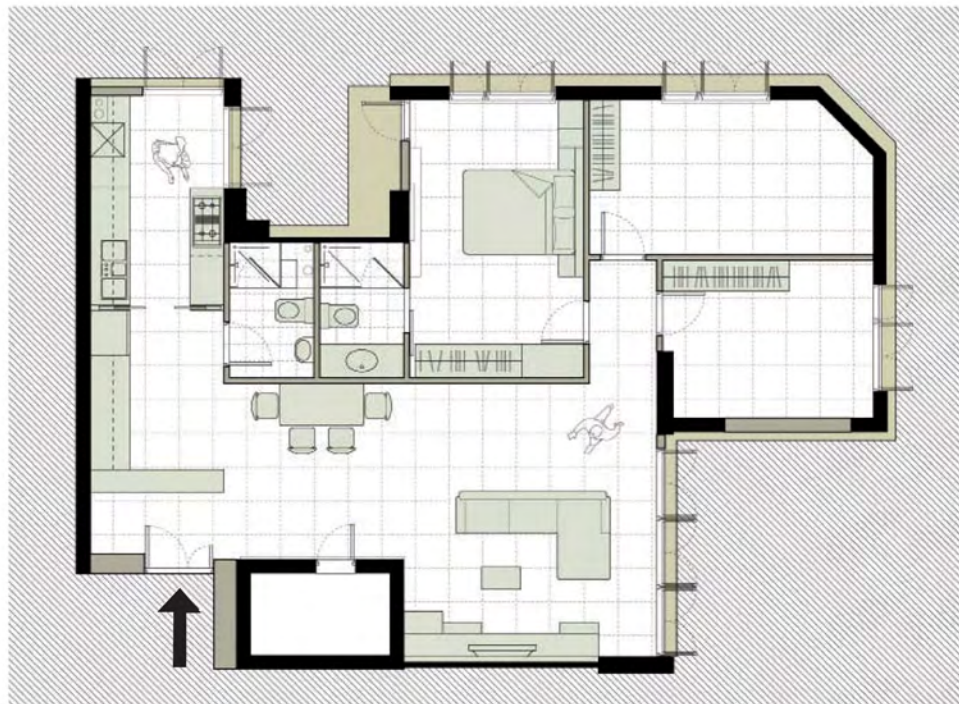
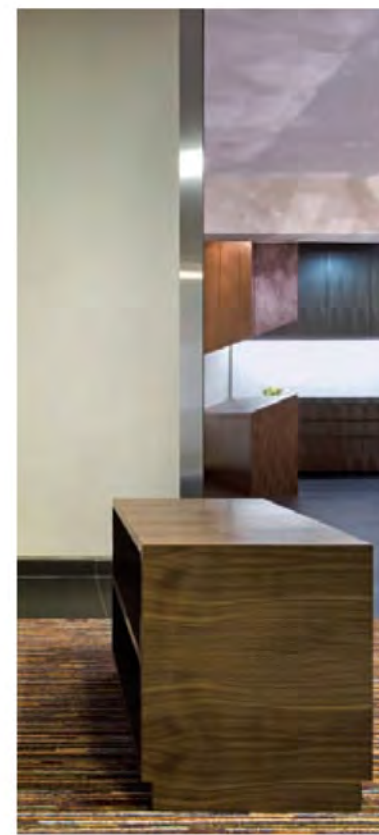
Axonometries



The hall area and the entrance to the kitchen were designed with a large area occupying the dining room area.



After studying the existing structure, one of the walls was demolished to create a more open space. Mirrored surfaces reflect the environment and enhance the sense of space.



Plan



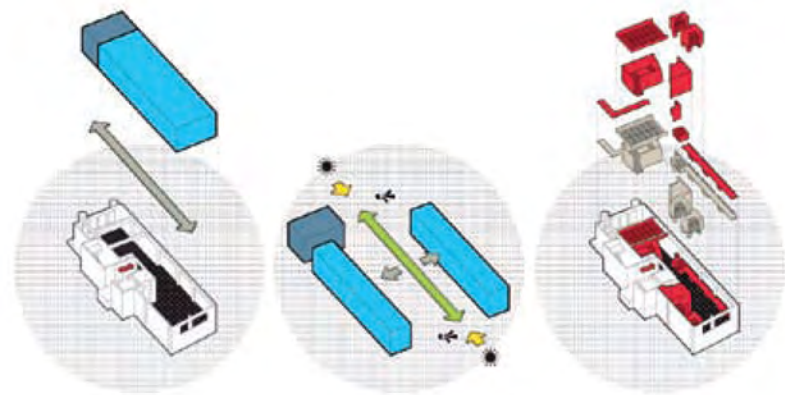
The furniture is inspired by Miesian aesthetics and reinterpreted in this modern context.



Thin Office is located in a post-war renovated building in Singapore. Due to the affluence of creative clients, the work environment was redesigned to offer different working scenes and possibilities.



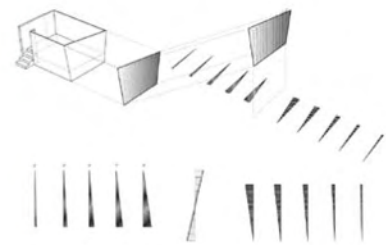
Plan



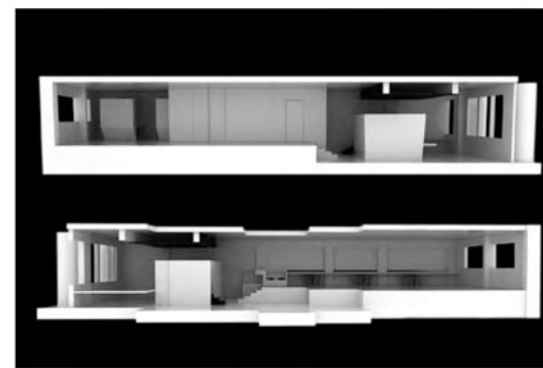
Axonometries



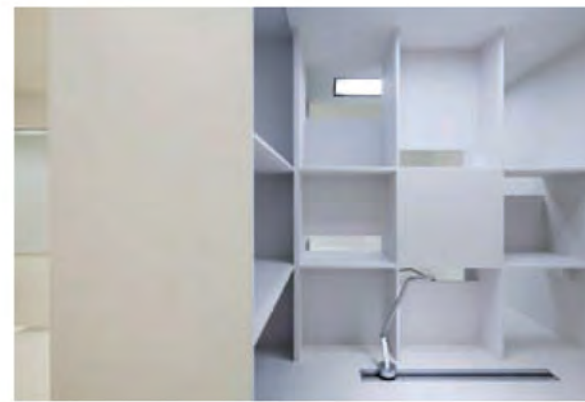
The narrow original floor plan offered the chance to play with different levels and volumes where the meeting spaces are located.



Exploded view



Sections



The space is organized into eight areas configured around a work table located to the side of the office.